

OPERATIONAL READINESS OF THE NATIONAL PUBLIC TRANSPORT REGULATOR

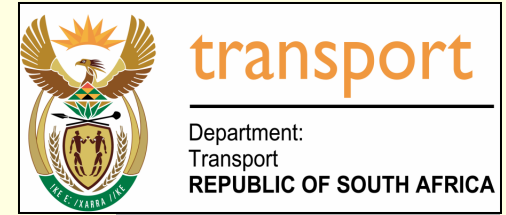


Presented by: Ms N Mtshwene

CONTENTS

1. Background
2. Functions of NPTR
3. Structure
4. Operational readiness
5. Challenges
6. Conclusion

1. BACKGROUND



- ❑ The NPTR is established in terms of sec 20 of the NLTA, Act 05 of 2009.
- ❑ The Minister must appoint a regulatory committee comprising of qualified members in various fields.
- ❑ The Department must allocate staff as a dedicated unit to assist the Regulator in the performance of its functions.

2. FUNCTIONS OF NPTR



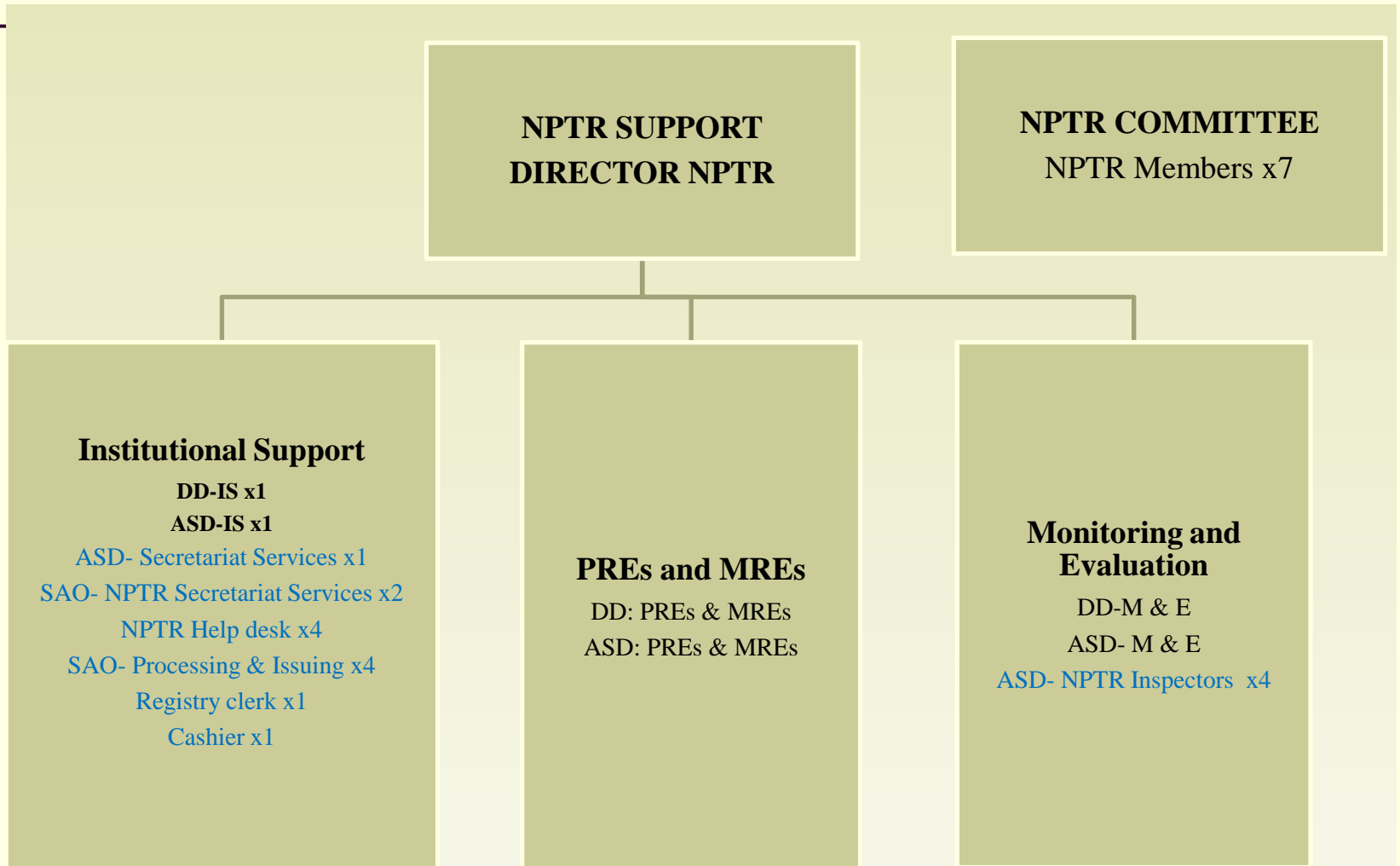
- Monitor and oversee public transport in the country including activities of PREs
- Receive and decide on applications relating to operating licences or accreditation for
 - interprovincial transport
 - tourist transport services;
- Oversee fares charged for public transport services throughout the country
- Advise the Minister on the making of regulations in relation to fares or fare structures in terms of section 8.

3. STRUCTURE OF NPTR

- ❑ Minister appointed the NPTR committee in 2013

Name	Position
1. Mr Charles Maluleke	Chairperson
2. Mr Lesedi Dinte	Deputy Chairperson
3. Prof Ntombizozuko Dyani–Mhango	Member
4. Prof Imtiaz Vally	Member
5. Ms Divhani Tshivhase	Member
6. Mr Titus Malaza	Member
7. Mr Paul Browning	Member

NPTR STRUCTURE cont...



4. OPERATIONAL READINESS OF NPTR



Office space	NPTR office will be at the Department of Transport (Forum Building). Officials are busy setting up.
Memorandum of Understanding	drafted MOU on administrative matters (PREs serving as post office for NPTR).
Appointment of NPTR inspectors	dependent on the activation of post in the new financial year. At the same time we are engaging the CBRTA.
Notice in the gazette	Minister will publish a notice in the gazette declaring a date on which the NPTR can accept applications. June 2015 Phased in approach: Accreditation

OPERATIONAL READINESS OF NPTR cont...



Guidelines for lodging applications

Draft accreditation guidelines developed and ready for consultation within the tourism industry.

Stakeholder engagement

- South African Tourism Services Association (SABOA)
- other small tourism associations.
- PREs;
- Taxi Industry
- Tourism Business Council of South Africa (TBCSA)

By May 2015

5. CHALLENGES



- ❑ Capacity of support staff – activation of posts;
- ❑ Sufficient parking at DoT offices;
- ❑ NLTIS – still designed to support the NLTTA not NLTA.

6. CONCLUSION



- ❑ Stakeholder engagement is critical in the operationalization of the NPTR.
- For more information on the NPTR contact :Ms. Nomsa Mtshwene
Tel: 012 – 309 3125/309 3318
Email: nptr@dot.gov.za or mtshwenn@dot.gov.za

THANK YOU...

